



FY 2015 NCDOT Public Transportation Division

Community Transportation Operating and Financial Statistics Report

ID 97

Contact Name: Johnson, Bradley

Counties Served: Iredell

Contact Phone: 704-832-2343

System Website: [0](#)

Contractor: None

Service Area Type: Single-County

System Type: Community

Out Of County Service Provided? Yes

Coordination with Other Transit Systems? Yes

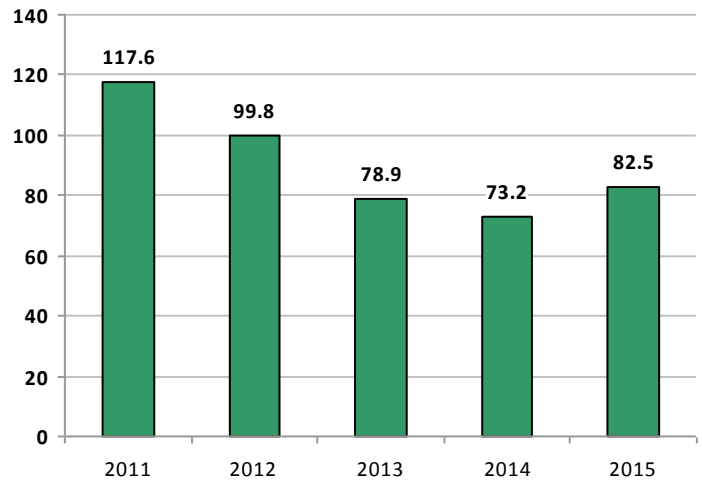


Peer Group: 2

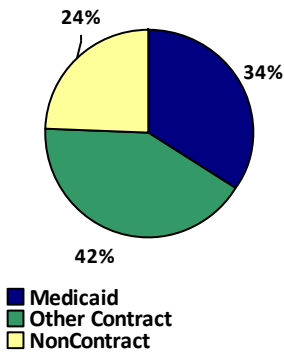
Trips, Hours and Miles By Mode

Service Type	Trips	Hours	Miles
Demand Response	75,307	43,012	694,840
Deviated Fixed	5,720	3,491	44,244
Fixed Route	1,482	2,075	46,060
Other	0	0	0

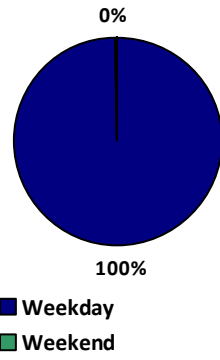
Trips By Year in Thousands



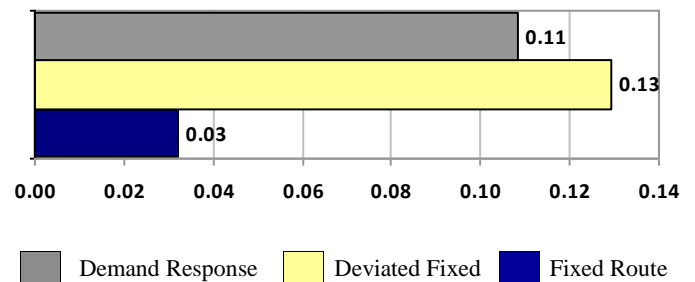
Trips By Funding Type



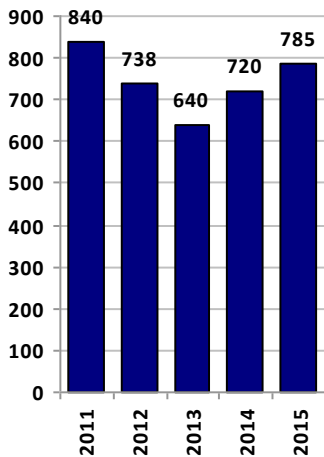
Trips By Day Type



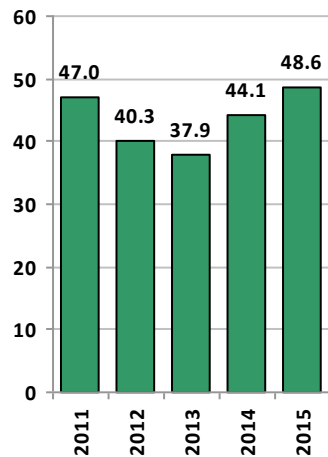
Efficiency By Mode (Weekday only)
Trips Per Mile



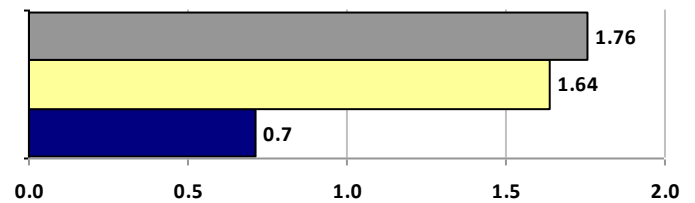
Transit Service Miles in Thousands



Transit Service Hours in Thousands



Trips Per Hour



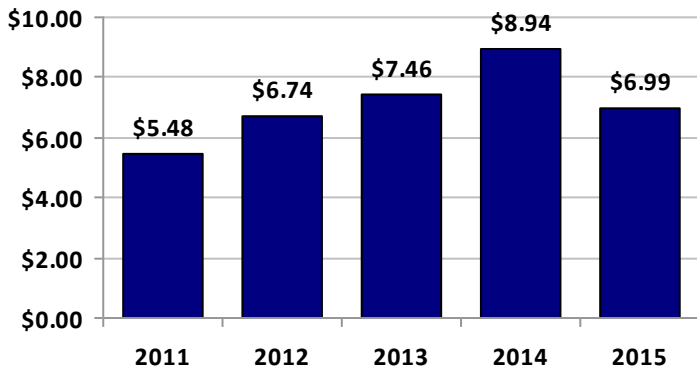


FY 2015 NCDOT Public Transportation Division

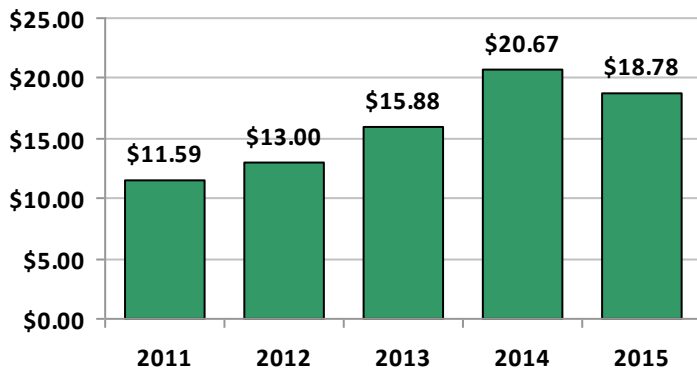
Community Transportation Operating and Financial Statistics Report

ID 97

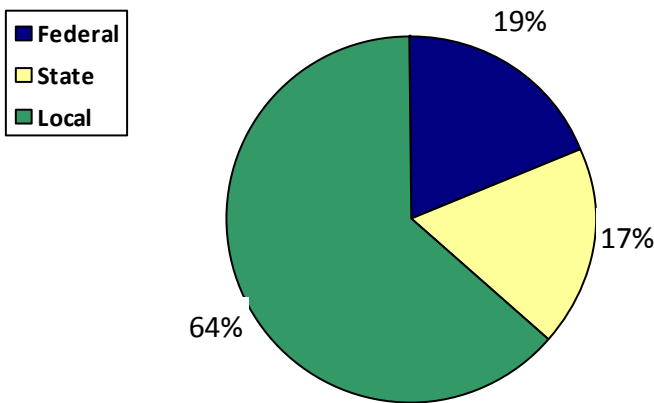
Subsidy Per Trip By Year



Cost Per Trip By Year



Administrative and Operating Funding Sources



NOTES:
There are three data categories- All Modes, Transit and Broker/Other. Unless otherwise indicated, metrics include all

BENCHMARKING STATISTICS are in blue, bold, and italics. Subsidy per trip is calculated using the total amount of Federal and State administrative and operating funds a transit system received divided by the total number of trips. Cost per trip is calculated using the total system expenses divided by the total number of trips. Non-contract trips per non-urban population is a measure of transit service offered to the general public as opposed to transit dependent populations.

ALL MODES	2014	2015	% Change
5310,16,17, 20 Funds:	\$155,193	\$56,182	-64%
5311 Funds:	\$166,167	\$200,761	21%
Other Federal Funds:	\$6,855	\$42,646	522%
<i>Federal Op. Funds:</i>	\$328,215	\$299,589	-9%
<i>Federal Cap. Funds:</i>	\$402,262	\$111,139	-72%
CTP Admin Funds:	\$10,385	\$12,548	21%
ROAP Funds:	\$252,532	\$225,125	-11%
Other State Funds:	\$0	\$4,299	0%
<i>State Op. Funds:</i>	\$326,230	\$277,220	-15%
<i>State Cap. Funds:</i>	\$50,282	\$13,892	-72%
Local Contract Funds:	\$813,203	\$940,980	16%
Local Fares:	\$45,648	\$27,975	-39%
Other Local Funds:	\$63,634	\$39,365	-38%
<i>Local Op. Funds:</i>	\$922,485	\$1,008,320	9%
<i>Local Cap. Funds:</i>	\$68,981	\$21,620	-69%
Reportable Incidents:	3	2	-33%
Reportable Fatalities:	0	0	0%
Reportable Injuries:	2	1	-50%
<i>Subsidy Per Trip:</i>	\$8.94	\$6.99	-22%
<i>Cost Per Trip:</i>	\$20.67	\$18.78	-9%
<i>Non-Contract Trips Per Non-Urban Population:</i>	0.42	0.33	-20%

TRANSIT ONLY	2014	2015	% Change
Total Trips:	73,227	82,509	13%
Miles:	719,513	785,144	9%
Hours:	44,060	48,578	9%
Total Expenses:	\$1,386,670	\$1,549,881	12%
Cost per Mile:	\$1.93	\$1.97	2%
Cost per Hour:	\$31.47	\$31.91	1%
Cost per Trip:	\$18.94	\$18.78	-1%
<i>Trips per Hour:</i>	1.66	1.70	2%
Trips per Mile:	0.102	0.105	3%

BROKER ONLY	2014	2015	% Change
Total Trips:	0	0	0%
Total Expenses:	\$0	\$0	0%
Cost per Trip:	\$0.00	\$0.00	0%



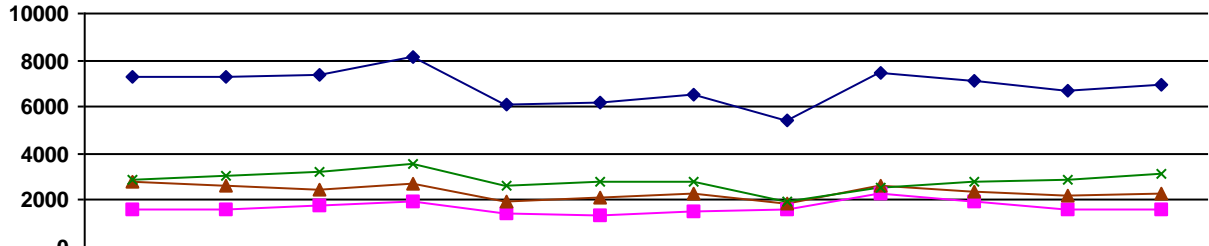
FY 2015 NCDOT Public Transportation Division

Community Transportation Operating and Financial Statistics Report

TRIPS BY DAY OF WEEK

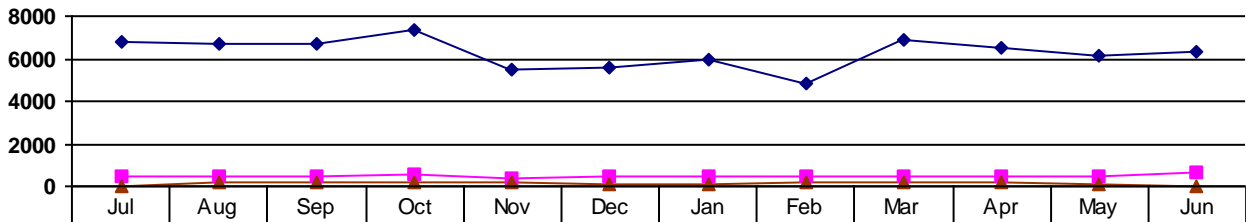
Day of Week	Jul	Aug	Sep	Oct	Nov	Dec	Jan	Feb	Mar	Apr	May	Jun
Weekday	7,290	7,271	7,378	8,126	6,034	6,165	6,512	5,375	7,482	7,080	6,664	6,956
Saturday	0	0	0	19	35	23	20	20	16	14	15	14
Sunday	0	0	0	0	0	0	0	0	0	0	0	0

TRIPS BY CONTRACT TYPE



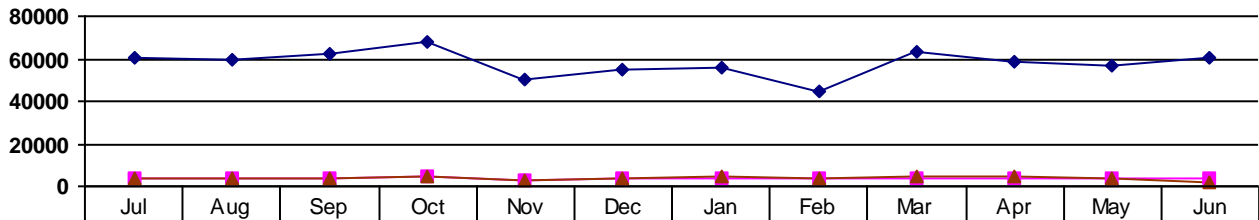
	Jul	Aug	Sep	Oct	Nov	Dec	Jan	Feb	Mar	Apr	May	Jun
Total	7290	7271	7378	8145	6069	6188	6532	5395	7498	7094	6679	6970
Non-Contract	1588	1614	1743	1934	1422	1338	1502	1573	2315	1987	1577	1602
Medicaid Contract	2797	2610	2427	2687	1980	2093	2257	1855	2665	2333	2196	2273
Other Contract	2905	3047	3208	3524	2667	2757	2773	1967	2518	2774	2906	3095

TRIPS BY MODE



	Jul	Aug	Sep	Oct	Nov	Dec	Jan	Feb	Mar	Apr	May	Jun
Demand Res	6802	6681	6706	7387	5457	5600	5971	4834	6878	6489	6156	6346
Dev Fixed	481	439	457	598	411	486	447	420	466	419	476	620
Fixed Rt	7	151	215	160	201	102	114	141	154	186	47	4
Other												

SERVICE MILES BY MODE



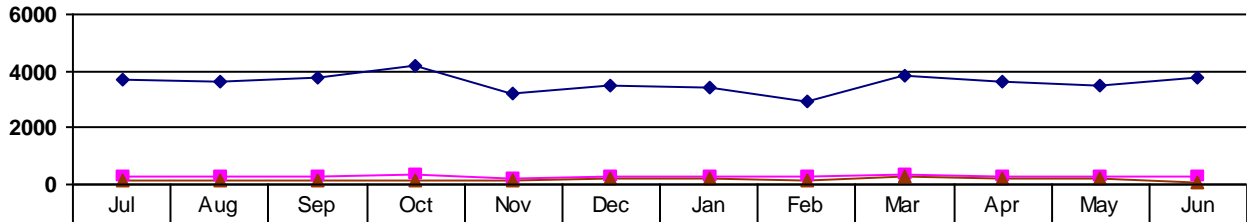
	Jul	Aug	Sep	Oct	Nov	Dec	Jan	Feb	Mar	Apr	May	Jun
Demand Res	60518	59718	61967	67623	50541	54934	55395	44511	63206	58942	56788	60697
Dev Fixed	3925	3871	3869	4322	3114	3498	3620	3406	3880	3597	3465	3677
Fixed Rt	3693	3697	3564	4269	3120	3829	4550	3571	5051	4725	4185	1806
Other												



FY 2015 NCDOT Public Transportation Division

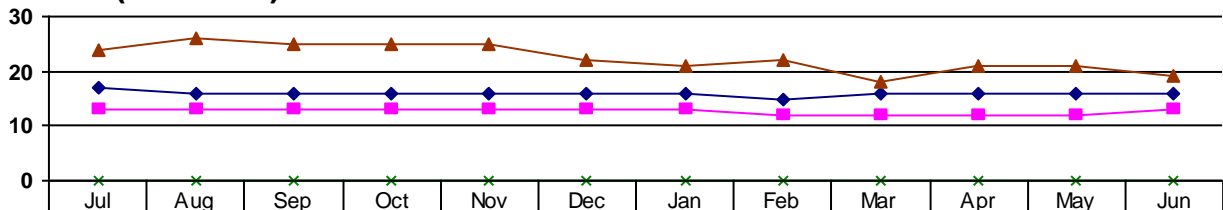
Community Transportation Operating and Financial Statistics Report

SERVICE HOURS BY MODE



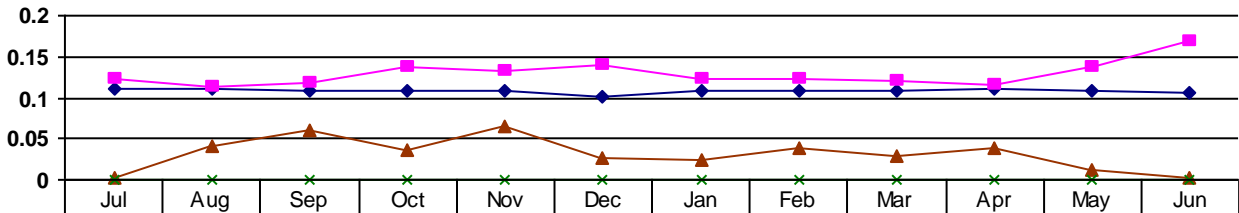
	Jul	Aug	Sep	Oct	Nov	Dec	Jan	Feb	Mar	Apr	May	Jun
Demand Res	3664	3639	3780	4157	3183	3462	3436	2918	3857	3640	3516	3760
Dev Fixed	302	305	295	330	242	277	287	274	318	289	278	294
Fixed Rt	151	141	145	171	126	175	214	162	276	222	195	97
Other												

MILES PER HOUR (SERVICE) BY MODE



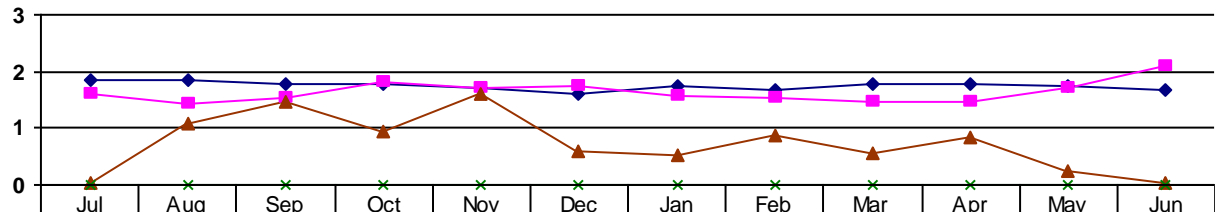
	Jul	Aug	Sep	Oct	Nov	Dec	Jan	Feb	Mar	Apr	May	Jun
Demand Res	17	16	16	16	16	16	16	15	16	16	16	16
Dev Fixed	13	13	13	13	13	13	13	12	12	12	12	13
Fixed Rt	24	26	25	25	25	22	21	22	18	21	21	19
Other	0	0	0	0	0	0	0	0	0	0	0	0

TRIPS PER SERVICE MILE BY MODE



	Jul	Aug	Sep	Oct	Nov	Dec	Jan	Feb	Mar	Apr	May	Jun
Demand Res	0.112	0.112	0.108	0.109	0.108	0.102	0.108	0.109	0.109	0.11	0.108	0.105
Dev Fixed	0.123	0.113	0.118	0.138	0.132	0.139	0.123	0.123	0.12	0.116	0.137	0.169
Fixed Rt	0.002	0.041	0.06	0.037	0.064	0.027	0.025	0.039	0.03	0.039	0.011	0.002
Other	0	0	0	0	0	0	0	0	0	0	0	0

TRIPS PER SERVICE HOUR BY MODE



	Jul	Aug	Sep	Oct	Nov	Dec	Jan	Feb	Mar	Apr	May	Jun
Demand Res	1.86	1.84	1.77	1.78	1.71	1.62	1.74	1.66	1.78	1.78	1.75	1.69
Dev Fixed	1.59	1.44	1.55	1.81	1.7	1.75	1.56	1.53	1.47	1.45	1.71	2.11
Fixed Rt	0.05	1.07	1.48	0.94	1.6	0.58	0.53	0.87	0.56	0.84	0.24	0.04
Other	0	0	0	0	0	0	0	0	0	0	0	0